



THE 6TH GENERATION ELSAG MOBILE PLATE HUNTER M6™ ALPR CAMERA WORKS HARDER, COSTS LESS

THE ELSAG MOBILE PLATE HUNTER M6 AUTOMATIC LICENSE PLATE READERS ARE THE MOST ADVANCED AVAILABLE, AIDING LAW ENFORCEMENT WITH PUBLIC SAFETY MISSIONS LIKE RECOVERY OF STOLEN VEHICLES AND LICENSE PLATES, IDENTIFICATION OF UNLICENSED DRIVERS, COLLECTION OF DELINQUENT TAXES/FINES, AIDING OF HOMELAND SECURITY AND AMBER ALERTS, PLUS MUCH MORE. THE ELSAG PLATE HUNTER M6 COMBINES OVER 20 YEARS OF HARDWARE AND SOFTWARE DEVELOPMENT WITH THE MOST ADVANCED ELECTRONICS AND SENSORS AVAILABLE. THE REDESIGN NOT ONLY IMPROVES PERFORMANCE BUT ALSO REDUCES THE OVERALL COST BY 25%.

ELSAG PLATE HUNTER M6 DESIGN FEATURES INCLUDE:

- Latest CMOS sensor technology
- Higher resolution cameras at 1280 x 1024 while the previous generation was only 640 x 480
- Field of view expanded by 30%
- Improved color accuracy and resolution of the color overview image
- Cameras are 10% lighter
- Improved and integrated power conditioning with a configurable delay timer
- Lower power consumption at 15w for 2 cameras
- Lower overall cost

THE ELSAG PLATE HUNTER M6™ IN ACTION

DIGITAL ELSAG ALPR CAMERAS ARE ATTACHED TO THE BODY OF A PATROL CAR OR TO INFRASTRUCTURE LIKE A UTILITY POLE OR SIGN GANTRY.

- 1 Patrolling officers and fixed cameras scan plates of passing vehicles, capturing license plate numbers, date/time stamps and GPS locations.
- 2 An infrared camera captures images of each plate and a color camera captures overview images of each vehicle.
- 3 A computer reads the plate characters and compares them with a hot list.



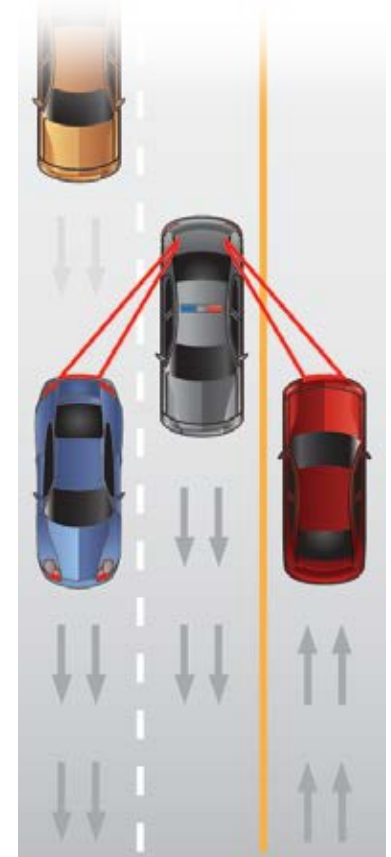
000-01T8

Database
Y01-N010
000-01T8
P93-F6L4
400-591T

- 4 Officers are instantaneously alerted of a match.

ELSAG PLATE HUNTER™ ALPR PERFORMANCE

- Cameras read license plates, day or night, in any weather.
- Mobile systems process plates on parked and moving vehicles.
- Plates are processed at up to 150 mph (241 kph) closing and passing speeds.
- Plates are recognized using specially designed protocols for each jurisdiction in which the systems are deployed.
- Alerts are sent to officers, command center and other patrol cars instantaneously, upon identifying a suspect vehicle.
- Captured data includes date/time stamps, GPS coordinates and photo of the license plate.
- Fixed systems can capture the speed of passing vehicles.
- Mobile systems transfer easily from vehicle to vehicle.
- Hot list updates are wirelessly received and transmitted.



Cameras can also scan in parking lots.



For more information, please email ALPRinfo@selex-es.us

Selex ES Inc., a Leonardo Company

4221 Tudor Lane, Greensboro, NC 27410 | Tel: 1 (877) 773.5724 | www.leonardocompany-us.com

This publication is issued to provide outline information only and is supplied without liability for errors or omissions. No part of it may be reproduced or used unless authorized in writing. We reserve the right to modify or revise all or part of this document without notice.

